

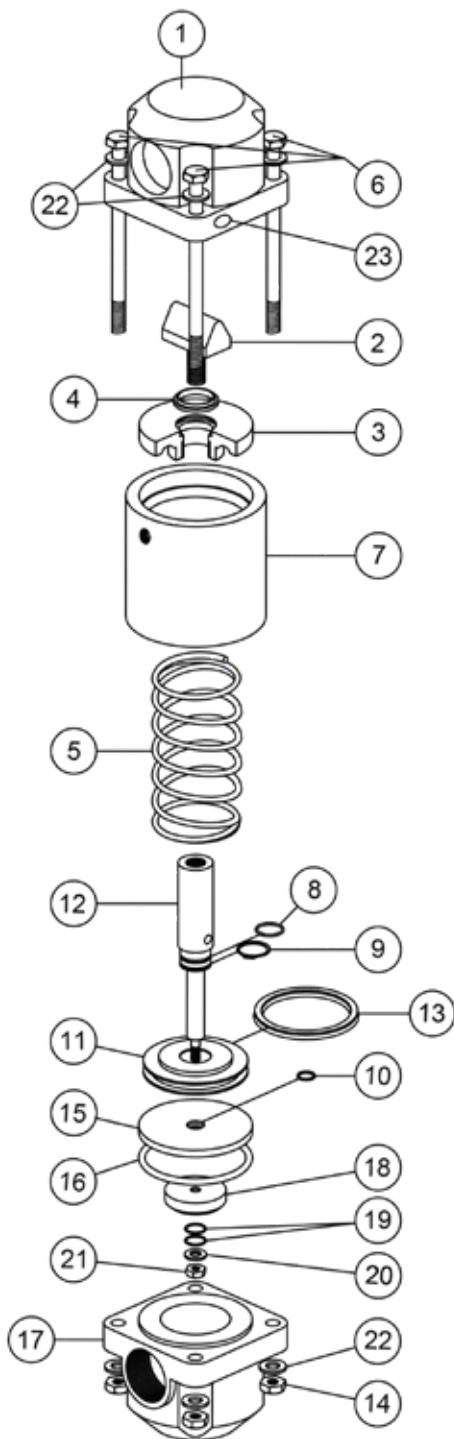
Schmidt Combo Valve™ - Remote Control



- Combined inlet and exhaust valve functions
- Full-ported, 1 1/4" (32 mm) thread, inlet side
- Rugged, compact design
- Simple to install and service
- Optional Jumbo 1 1/2" (38 mm) full ported thread also available for high flow applications
- Note: all parts below suit the 1 1/4" Combo Valve



Part Number	Description
DM 2223000	Combo Valve 1 1/4" (32 mm)
DM 2223002	Jumbo Combo Valve 1 1/2" (38 mm) – used in the ASAP System
DM 222300099	Service Kit for 1 1/4" Combo Valve (*)



Parts Breakdown

No.	Part	Part Number
1	Cap	DM 222300001
2	Pinch Ram	DM 222300002
3	Upper Rod Guide	DM 222300003
4*	Seal (Upper Rod)	DM 222300004
5	Spring	DM 222300005
6	Bolt, 1/2" UNC x 9"	DM 701051118
7	Cylinder	DM 222300007
8*	O-ring (Shaft)	DM 222300008
9*	Snap Ring	DM 222300009
10	Seal (Lower Rod)	DM 222300010
11	Piston	DM 222300011
12	Shaft	DM 222300012
13*	Piston Seal	GV 214900004
14	Nut, 1/2" UNC	GV 214900008
15	Lower Rod Guide	DM 222300015
16*	O-ring (Lower Rod Guide)	DM 222300016
17	Base	DM 222300017
18*	Valve Plug	DM 222300021
19*	O-ring (Combo Valve Plug)	DM 222300020
20*	Fender Washer, 3/8"	DM 7016507
21*	Nylock Nut, 3/8" UNC	DM 7019507
22	Flat Washer, 1/2" SAE	DM 702750402
23	Combo Drive Pin	DM 222300019
24	Vent, 1/8"	DM 2014300
25	90° Swivel, 1/2" x 1/2"	DM 420350404

* Included in Service Kit for 1-1/4" Combo Valve

5